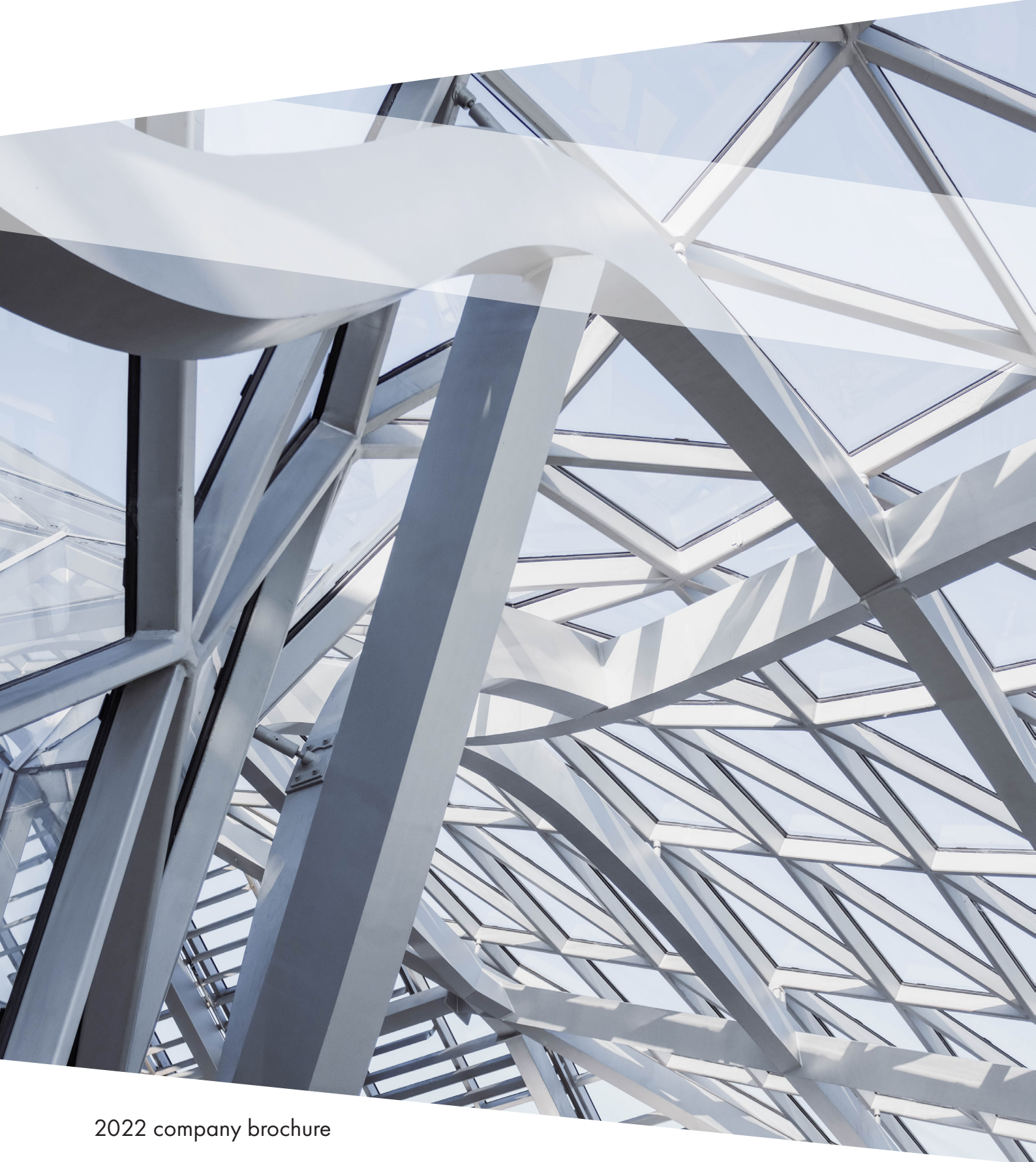




SOMAC CONTRACTING CO.

شركة سوماك للمقاولات





Contents

1/ Leadership's message

2/ History

3/ Vision

4/ Capabilities and value proposition

5/ Geographical coverage & clientele

6/ Example projects

7/ Example client testimonials

1/ Leadership's message



Since its founding in the Kingdom of Saudi Arabia in 1977, SOMAC grew exponentially to become a leading civil engineering contractor in the Middle East with operations spanning across Saudi Arabia, Qatar, Lebanon, Egypt, Libya and Southern Africa. Achieving the leading position that SOMAC occupies today in the Middle East was only made possible by the outstanding effort and commitment invested by its founding team and every single member of its workforce, continuously pushing forward armed with determination, willpower and technical expertise in civil engineering design, planning and execution.

With 45 years of experience and counting, SOMAC today boasts a recognized unparalleled reputation of excellence in safety, delivery quality, innovation and reliability, and cost effectiveness. We are often called upon to execute the most technically challenging construction projects under the tightest timelines, particularly in the areas of bridges and infrastructure where we have become a reference name in the industry in the markets where we operate. All that has been achieved with an excellent safety record: we are very proud to say that throughout our entire history, we have neither suffered a single fatality nor a serious injury.

It is this heritage that allows us to possess the strong technical and financial credentials and stability to build long-term partnerships with our clients and offer them a full range of diversified construction services, all while offering a safe and progressive work environment for our employees. We have built a dedicated team of exceptionally competent professionals and



amassed a range of construction equipment that gives us the capability to undertake a wide variety of projects spanning multiple sectors. Throughout our 44-year history, we have completed projects in the areas of infrastructure (bridges, tunnels and underpasses, roads, railways, utilities connections), industrial (oil & gas and petrochemicals), utilities (district cooling and solid waste treatment plants), and commercial & residential real estate.

We continue to build on our proven capabilities and track record to consistently provide our clients with exceptional construction services that exceed requirements and solve all arising challenges on schedule and within budget. It is even our policy to fully endeavor to complete assignments ahead of schedule to enable our clients to utilize and realize the value of their assets.

Saleh O.M. Al-Ghamdi
Chairman / President

Elie F. Aoun
General Manager













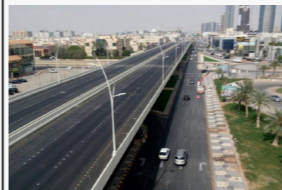

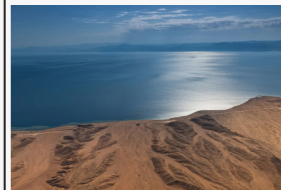
2/ History



Our history began over 44 years ago, when a passionate team of civil engineers dedicated themselves to achievement and excellence in their profession. They did not have the financial means that many deem necessary to build a construction enterprise; however, armed with will power, persistence and technical expertise, our teams succeeded against all odds. It is specifically these attributes that continue to drive our success.



Construction of bridges in Jubail, 1981

<p>1981 Causeway bridges, lighting, traffic signals SAR 100-150mn Jubail, KSA</p> 	<p>1989 International Commercial Complex SAR 30-70mn Dammam, KSA</p> 	<p>1993-1994 Gulf Market (Al-Hayat Plaza) SAR 70-100mn Dammam, KSA</p> 	<p>1999 Aiman Irrigation System SAR 30-70mn Aiman, Egypt</p> 	<p>2001 Al-Kufra water network SAR 30-70mn Al-Kufra, Libya</p> 	<p>2003-2009 Bridges and underpasses SAR 100-150mn Dammam, KSA</p> 	<p>2006-2009 Aramco Petrorabigh PC2 monomer unit SAR 200-400mn Rabigh, KSA</p> 	<p>2006-2011 District cooling, waste treatment, other works SAR 100-150mn The Pearl, Qatar</p> 
<p>2006-2008 Ring road bridges and railway crossings SAR 70-100mn Dammam, KSA</p> 	<p>2007-2009 Saudi Kayan petchem complex SAR 70-100mn Jubail, KSA</p> 	<p>2007-2013 Underpasses, bridges, culverts SAR 200-400mn Al-Jouf, KSA</p> 	<p>2011-2016 Haramain highspeed railway SAR 150-200mn Tuwwal, Jeddah, KSA</p> 	<p>2012-2017 Riyadh bridges SAR 150-200mn Riyadh, KSA</p> 	<p>2014-2021 Riyadh Metro lines, tunnels and works SAR 200-400mn Riyadh, KSA</p> 	<p>2022 (ongoing) NEOM street lighting and ancillary works SAR 25-50mn NEOM, KSA</p> 	

3/ Vision

SOMAC's vision

Our vision is to be the leading civil engineering contractor, particularly in the area of infrastructure, in the markets where we operate. We are sought after by value-minded clients to execute the most technically challenging projects and by stellar employees looking for a top-notch experience and career in construction.

SOMAC's mission

We aim to achieve our vision by continuing to be the benchmark of world-class excellence in safety, technical expertise, delivery quality, innovation and reliability, and cost effectiveness. All founded in absolute and uncompromising business integrity.

Culture and values

Our culture is driven by an environment of transparent, respectful, collaborative and inclusive interaction, and built on the following core values.

Ethics and integrity: we are founded in absolute and uncompromising ethics and integrity, committed to doing what is just and right for our clients, employees and suppliers.

Health and safety: we are resolute in protecting the health and safety of our people. This commitment is proven by the fact that, throughout our entire history, we have neither suffered a single fatality nor a serious injury.



Delivery quality, innovation and reliability: we are committed to excellence in execution, delivering projects with the utmost level of quality and reliability on time and budget. This is enabled by our extensive technical expertise and creative innovation in solving unforeseen site challenges.

Giving back: we are committed to the wellbeing of the communities where we work and strive to give back, including by engaging with and employing from local communities.

Sustainability: we continuously look for and adopt practices that minimize the environmental impact of the projects we execute for our clients.



4/ Capabilities and value proposition



SOMAC specializes in the following civil contracting areas:

Civil works

- Earth works
- Construction of all types of concrete foundations and resolution of related issues (e.g. dewatering)
- Construction of transport infrastructure and associated structures (roads, bridges, underpasses, tunnels, railways, culverts, signals...)
- Concrete paving / sidewalks, curbstones, pavements, etc.
- Construction of utilities infrastructure (dams, water treatment plants, district cooling plants, etc.)
- Construction works for industrial, oil & gas, and petchem facilities
- Construction of all types of buildings (residential, commercial, highrises, villas, etc.)



Electrical and mechanical works

- Plant electrical and instrumentation works (switch yard, cable laying, splicing/terminations, transformers, switchgears, MCC panels, etc.)
- HVAC works (procurement, supply, installation, testing and commissioning of HVAC equipment, copper and steel piping, special equipment like explosion-proof valves, motors, blast-resistant dampers, DDC control panels and instrumentation, smoke and exhaust fans, etc.)

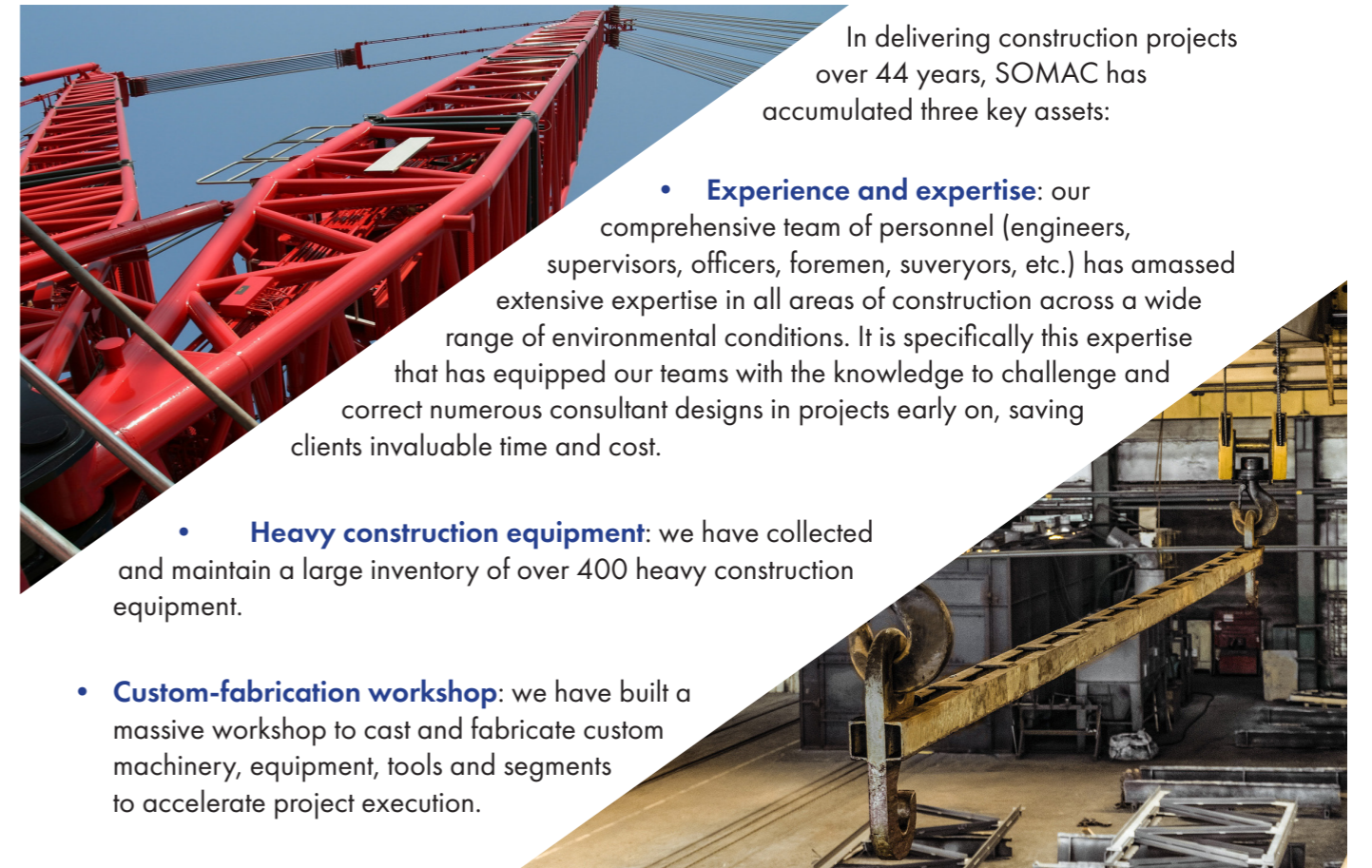


Piping works

- Fabrication of above/underground piping, oil & gas, water lines
- Field erection
- Hydrotesting



SOMAC also performs a wide range of related works such as painting, sandblasting, pipes insulation, buildings insulation, etc.



In delivering construction projects over 44 years, SOMAC has accumulated three key assets:

- **Experience and expertise:** our comprehensive team of personnel (engineers, supervisors, officers, foremen, suveryors, etc.) has amassed extensive expertise in all areas of construction across a wide range of environmental conditions. It is specifically this expertise that has equipped our teams with the knowledge to challenge and correct numerous consultant designs in projects early on, saving clients invaluable time and cost.
- **Heavy construction equipment:** we have collected and maintain a large inventory of over 400 heavy construction equipment.
- **Custom-fabrication workshop:** we have built a massive workshop to cast and fabricate custom machinery, equipment, tools and segments to accelerate project execution.

Our history and our accumulated assets have solidified our value proposition, allowing us to offer clients:

- **World-class technical expertise:** our passion, 'can-do' attitude and experience made us renowned in the industry as the go-to team for delivering highly complex, atypical and unusually challenging construction projects.
- **Expedited mobilization and project delivery:** we have delivered large projects in record time, and in many cases ahead of schedule, feats often uncommon in the construction industry. In every instance where a massive project was divided into smaller comparable assignments across different contractors, we were number 1 at the finish line.
- **Value-based offering:** our efficient organization and management approach, and our passion for delivering value to our clients and build long-term relationships allow us to be among the most competitive contractors in the markets where we operate.



5/ Geographical coverage and clientele

Throughout our 44-year history, we have developed a strong presence in the Middle East and Africa, with operations across 6 regional countries. Saudi Arabia remains our core and primary market.



We have worked on some of the most exciting developments in the region and delivered projects for leading clients in the markets where we operate. A subset of these clients is showcased below.



6/ Example projects Transport infrastructure

Riyadh Metro

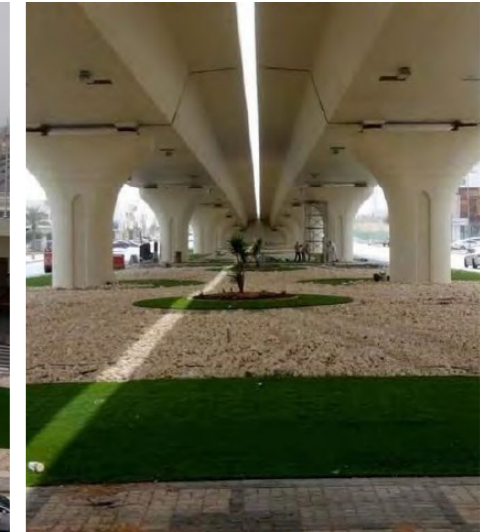
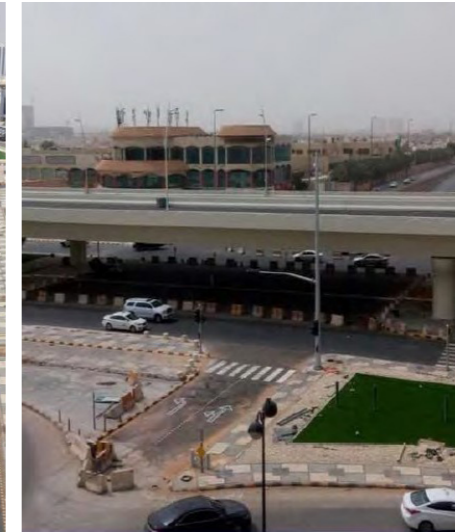
Client: Royal Commission For Riyadh City / FAST Consortium

Description: Construction works across several lines including earth works, viaducts construction, tunnels, concrete and structural works (retaining walls, cut & cover tunnels, slabs & decks, water barriers, etc.), finishing works (installation of edge units, painting, etc.) and landscaping.

Value: SAR 200-400mn

Start-End dates: 2014-2021

Consultant: RAMPED (Riyadh Advanced Metro Project Execution and Delivery)



Riyadh bridges

Client: AlRiyadh Municipality

Description: Construction of two bridges in Riyadh: (i) intersection of Al-Takhassusi & Al-Arouba roads, (ii) intersection of King Abdulaziz & Al Emam Bin Abdulaziz roads. Works covered end-to-end construction activities including construction of temporary detour roads, excavation, backfilling, foundations, bridge structures (piers, pier caps with form liners, abutments, retaining walls, cast in place box girders, post tensioning and grouting, precast barriers, expansion joints, elastomeric bearing pads, structural steel arches, etc.), waterlines (drainage, sewer, and potable waterlines), electrical works (medium and low voltage cabling, substations, lighting, traffic signals and camera systems), finishing (asphalting, road marking), and landscaping and irrigation.

Value: SAR 150-200mn

Start-End dates: 2012-2017

Consultant: Abalkhail Consulting Engineers



Haramain highspeed railway

Client: Saudi Railways Organization (SAR) / Al-Arab Contracting Company

Description: Construction of road, rail and wadi bridges for Areas 2 & 3 of the Haramain Highspeed Railway.

Value: SAR 150-200mn

Start-End dates: 2011-2016

Consultant: Dar Al-Handasah

6/ Example projects Utilities

The Pearl Island, Qatar

Client: United Development Company, ENVAC Qatar, CAT International, Qatar Dredging Company

Description: Construction of a pneumatic solid waste treatment plant, an integrated district cooling plant, sewage treatment plant civil works and transmission lines, a dozen culverts on dry land, and associated works for The Pearl Island, Qatar.

Value: SAR 100-150mn

Start-End dates: 2006-2011

Consultant: Dar Al-Handasah



Al-Kufra water network

Client: Ministry of Public Works, Libya

Description: Construction of water network in Al-Kufra province, along with 100 housing units and ancillary works.

Value: SAR 30-70mn

Start-End dates: 2001

Consultant: Libyan Government



Aiman irrigation system

Client: Ministry of Public Works & Water Supply, Egypt

Description: Procurement and installation of general irrigation system in Aiman Area (Egypt), including large distance pressure pipes, pump stations, pumps, etc.

Value: SAR 30-70mn

Start-End dates: 1999

Consultant: Egyptian Government

6/ Example projects Industrial / Oil&Gas / Petrochemical

Saudi Kayan Petrochemical Complex

Client: SAUDI KAYAN / Mohammad Al-Mojil Group

Description: SOMAC was among a distinguished number of contractors selected to support one of the largest petrochemical projects in the world located in Al-Jubail, Saudi Arabia. SOMAC performed various construction works (spanning from earth and geotechnical works to foundational, structural and other civil works) in the Utilities & Offsites scope which comprised about 30% of the total project.

Value: SAR 70-100mn

Start-End dates: 2007-2009

Consultant: Fluor Arabia



PetroRabigh PC2 Monomer Unit

Client: Petro Rabigh / Mitsui Engineering / Mohammad Al-Mojil Group

Description: Construction of PC2 Monomer unit (mono-ethylene glycol and propylene oxide) for Petro Rabigh (joint venture between Saudi Aramco and Sumitomo Chemical). Scope covered civil, structural and architectural works including, inter alia, construction of process interface buildings and substation buildings (with HVAC), pipe racks, equipment foundations, tanks foundations, cooling waterlines, fire waterlines, deep pits and structures (EO reactor, EO stripper, EC reactor, CO2 absorber, MEG purification), manholes, pipe trenches, draining u-ditches, paving and roads.

Value: SAR 200-400mn

Start-End dates: 2006-2009

Consultant: Mitsui Engineering and Shipbuilding Company



6/ Example projects Commercial / Residential

Apartments Compound

Client: Royal Commission of Jubail and Yanbu (RCJY)

Description: Procurement and construction of an apartments compound including several apartment buildings and two substations. Works covered all site preparation activities including the construction of new roads, parking areas, walkways and utilities (water, sewage, stormwater runoff, electricity, telecom and LAN), security systems, HVAC systems, and special architectural features.

Value: SAR 50-75mn

Start-End dates: 2012-2013

Consultant: Saudi Arabian Bechtel Company



Fanateer Sea Club

Client: Royal Commission of Jubail and Yanbu (RCJY)

Description: Procurement and construction of new sea club buildings locating within the Al Fanateer Marina Development on Jubail, KSA. The expansion work included a diving and water sport club, a youth club, a bowling club, an indoor swimming pool, indoor multi-purpose courts, a mosque and an amenities building.

Value: SAR 60-100mn

Start-End dates: 2008-2010

Consultant: Saudi Arabian Bechtel Company



Gulf Market (Al-Hayat Plaza)

Client: Ali Abdulaziz Al-Doayan

Description: Procurement and construction of a Gulf Market occupying an area of 150,000 square meters, including 1,560 commercial units, 6 main kiosks, a great mosque, 17 power rooms (18mn watts), 12 telecom rooms, 1,500 car parks, thousands of precast decorative arches 10 meters wide), a fire fighting system, a drainage system, 36,000 square meters of covered and air-conditioned streets, side walks, water fountains, play grounds, etc.

Value: SAR 70-100mn

Start-End dates: 1993-1994

Consultant: Al Awami Planners

7/ Example client testimonials



KKIA traffic improvement program



"SOMAC were very professional and completed the project on time, quality and cost. We look forward to working with them in the near future."

Riyadh Metro lines and works

الهيئة الملكية لمدينة الرياض
ROYAL COMMISSION FOR RIYADH CITY



"SOMAC executed and satisfactorily completed its work, and FAST very much appreciated the experience, expertise and capabilities of SOMAC's in-house design/fabrication facilities, as well as its installation of post-tensioning and the utilization of SOMAC's certified engineers, technicians and equipment. SOMAC kept to the required schedule whilst maintaining a high standard of quality and safety, as well as complying with all other contractual obligations."

Saudi Kayan petchem complex



"SOMAC accomplished all works in a professional manner adhering to the international standards of construction excellence."

Riyadh bridges



AlRiyadh Municipality



"You have proved your high technical caliber in the execution of bridge works and your high professional capacity in overcoming all challenges faced. You have been exceptional partners in completing two of Riyadh's most recent bridges. We observed that your competence was due to your professional, administrative and technical crews that were teamed with a skilled workforce trained in all aspects of the trade, and supported by your possession of a complete fleet of both heavy and light equipment. Also, among the elements of your success were your professional and technical capabilities of design and fabrication in your workshops."

Haramain highspeed railway



"SOMAC's scope included around 80,000m³ of concrete, 18,000 tons of reinforcing steel, 2,000 tons of post-tensioning steel, 1,000 bearing pads. SOMAC were on schedule while maintaining a high standard of quality and safety and always complying with contractual obligations."

Aramco PetroRabigh PC2 monomer unit



"During the construction period, SOMAC has shown high quality and safety standards, and has always maintained a reasonable schedule. We are satisfied with SOMAC's work performance and work quality. We wish them success in their future projects."

Causeway bridges, lighting and traffic signals



"SOMAC organized the project in an efficient and professional manner and completed the work ahead of schedule and in a very acceptable way. We believe the company and its administrative, engineering and supervisory staff are highly qualified for the construction of difficult reinforced and prestressed concrete structures."



Gulf Market (Al-Hayat Plaza)



"We testify that SOMAC executed the project with full compliance with the contract specifications and finished it 5 months before the deadline of 22 months."



SOMAC CONTRACTING CO.

شركة سوماك للمقاولات

P.O. Box 1770 - Dammam 31441
Kingdom of Saudi Arabia
Tel: +966 13 826 1308 / 826 0427
Fax: +966 013 826 8945
Email: info@somaccontracting.com
www.somaccontractingco.com